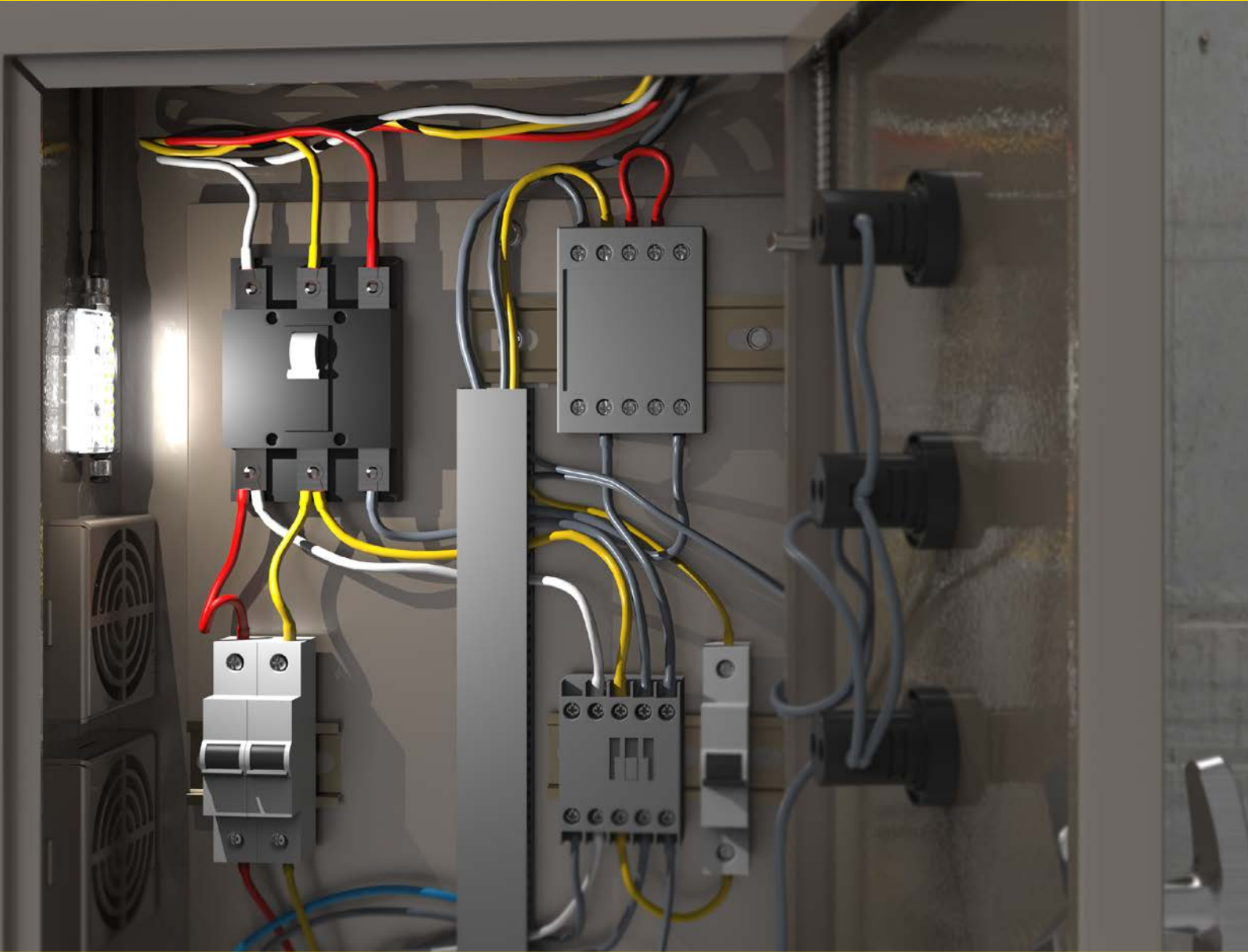


WLR95 Compact Area Lights

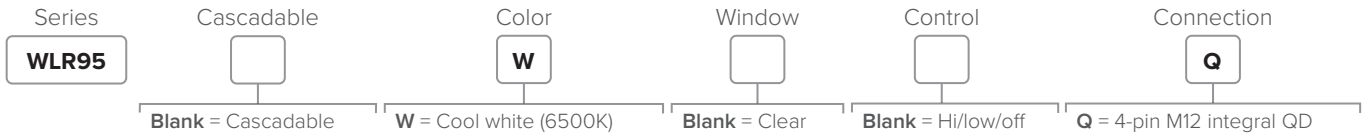


Problem-Solving Illuminator for Tough Environments

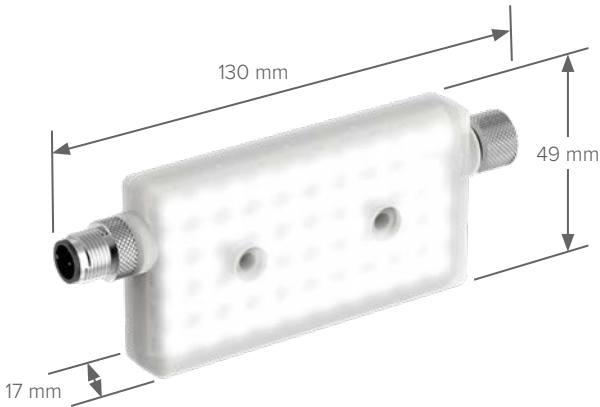
- Compact footprint delivers exceptional illumination for enclosures, conveyors, machines, and vision applications
- Daisy chain multiple units effortlessly with the unique double-ended cascade feature
- When it comes to lumens per dollar spent, it outshines the competition, making it the perfect fixer for any lighting oversight
- Featuring an impressive output relative to its size, this small, affordable light fits effortlessly into any space
- Engineered with a rugged, overmolded exterior and built to withstand harsh conditions

BANNER[®]
more sensors, more solutions

WLR95 In-Line Work Lights



Specifications



Supply Voltage	12 to 30 V DC
Lumens	600
Construction	Connector: Nickel-plated brass Housing: TPU (Removable cap covering female quick disconnect included)
Operating Conditions	-40 to +50 °C
Environmental Rating	IP65, IP67, IP68, UL Type 1
Certifications	

Accessories



SMBR90RA
Right-angle bracket



SMBR90RAMAG
Right-angle magnetic bracket



LMBR95MAG
Magnetic mounting bracket kit



PSW-24-1
1A, 24 V DC power supply



PSW-24-2
2A, 24 V DC power supply



ACC-CAP M12-10
Protective end cap (set of 10 caps)



M12 Cordset
Straight connector models listed; for right-angle models, add RA to the end of model number (example, MQDC-406RA)

4-Pin
MQDC-406 2 m (6.5')
MQDC-415 5 m (15')
MQDC-430 9 m (30')



M12 Double-ended Cordset
Straight connector models

4-Pin
MQDEC-401SS 0.31 m (1')
MQDEC-403SS 0.61 m (3')
MQDEC-406SS 2 m (6.5')



M12 QD Splitter Cable
Male trunk with 0.3 m female branches

4-Pin
CSB-M1241M1241 0.30 m (1')
CSB-M12415M1241 4.5 m (15')
CSB-M12425M1241 7.6 m (25')



Banner Engineering Corp.

9714 10th Avenue North • Minneapolis, MN 55441 • 1-888-373-6767 • www.bannerengineering.com