

# Multicolor In-Line Status Indicator



The S15L In-Line Status Indicator with Modbus provides highly local warning and alarm status indication

- Easy, visual indication for operator guidance
- Custom status indication with multiple colors and animations
- Reliable use in industrial environments like washdown, vibration, and temperature for motors

# S15L Pro In-Line Status Indicator with Modbus

Housing	Style	Control	Connection	Model
S15	Pro	Serial Modbus RS-485	4-pin M12 integral male/female quick-disconnect	<b>S15LPSQ</b>

## Specifications



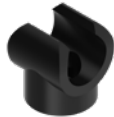
<b>Supply Voltage</b>	12 to 30 V DC
<b>Construction</b>	Coupling material: Nickel-plated brass Connector body: PVC diffuse white
<b>Operating Conditions</b>	-40 to +45 °C
<b>Environmental Rating</b>	IP65, IP67, IP68, UL Type 1
<b>Certifications</b>	



## Accessories



**LMBM12MAG**  
Attaches to  
M12 cordset end



**LMBM12SP**  
Attaches to  
M12 cordset end



**LMBS15MAG**  
Magnetic Mount



**LMBS15SP**



**M12 Cordset**  
Straight connector models listed; for right-angle models, add RA to the end of model number (example, MQDC-406RA)

**4-Pin**  
**MQDC-406**  
2 m (6.5')  
**MQDC-415**  
5 m (15')  
**MQDC-430**  
9 m (30')



**M12 Double-ended Cordset**  
Straight connector models

**4-Pin**  
**MQDEC-401SS**  
0.31 m (1.0')  
**MQDEC-403SS**  
0.61 m (3.0')  
**MQDEC-406SS**  
2 m (6.5')



Banner Engineering Corp.

9714 10th Avenue North • Minneapolis, MN 55441 • 1-888-373-6767 • [www.bannerengineering.com](http://www.bannerengineering.com)