

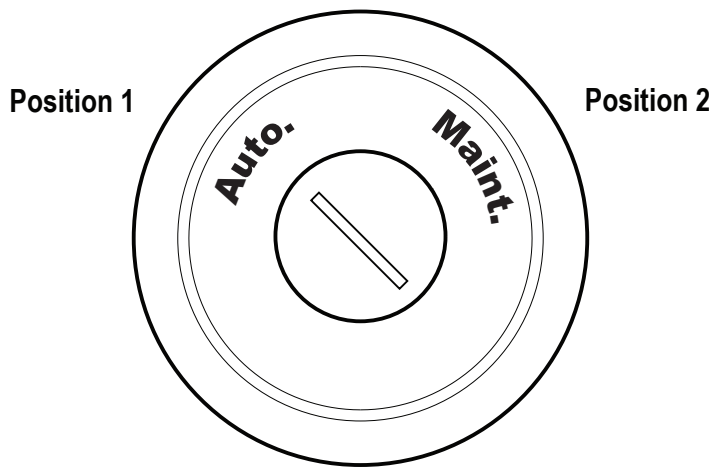
## Custom Product Supplemental Instructions

Custom Model: OS80K2LX2XR2Q, p/n 810393.

This product has been modified from the standard product. For standard product information, refer to p/n 205302 at [www.bannerengineering.com](http://www.bannerengineering.com), or contact Banner Engineering.

## Modifications

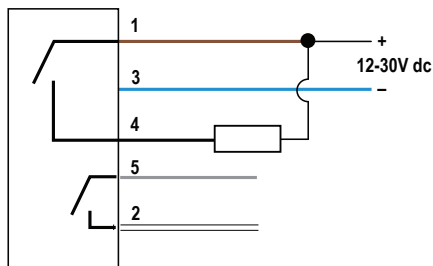
- Derived from model OS80K2LX1GRQ, p/n 804815.
- Custom operation, laser marking.
- Banner reserves the right to modify this product without prior notice.



2 Position Switch					
Model	Operator	Illumination		Contacts	Output
		Color 1	Color 2		
OS80K2LX2XR2Q	2 Position, Off-On	N/A	Red Flashing (activated)	2 NO	Actuation (position 2) activates Color 2, and closes both NO outputs.

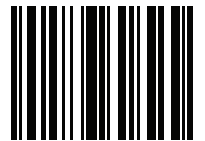
### Color Key

- 1 = Brown
- 2 = White
- 3 = Blue
- 4 = Black
- 5 = Gray



### WARNING:

- Do not use this device for personnel protection
- Using this device for personnel protection could result in serious injury or death.
- This device does not include the self-checking redundant circuitry necessary to allow its use in personnel safety applications. A device failure or malfunction can cause either an energized (on) or deenergized (off) output condition.



219449