

Custom Product Supplemental Instructions

Custom Model: OS80K2LX1XB2Q, p/n 811104.

This product has been modified from the standard product OS80K2LX1GRQ, p/n 804815. For standard product information, refer to p/n 205302 at www.bannerengineering.com, or contact Banner Engineering.

Banner verifies this configuration and does not guarantee product performance in specific applications.

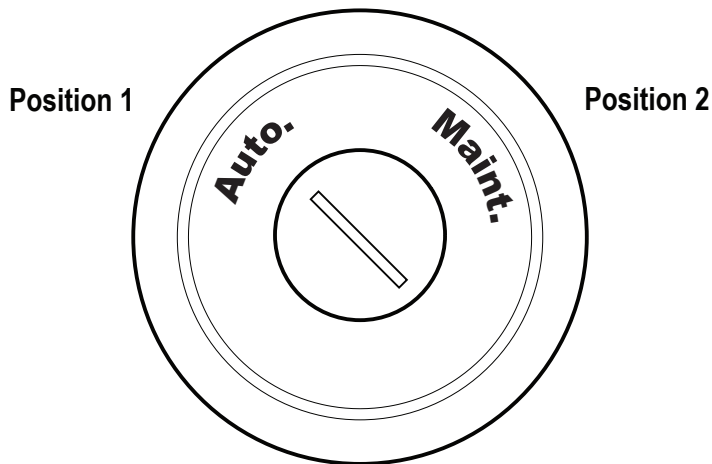
No cancelations and no returns ("NCNR") on any accepted orders of Banner non-standard or custom products.

Banner Engineering Corp. reserves the right to change, modify, or improve the design of the product without assuming any obligations or liabilities relating to any product previously manufactured by Banner Engineering Corp.
 © Banner Engineering Corp. All rights reserved.

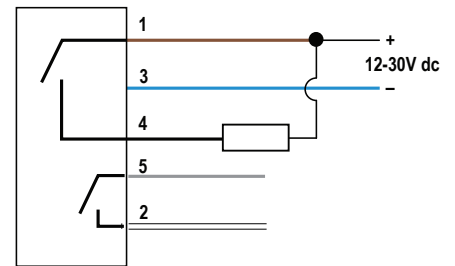
Modifications

- Custom operation, laser marking

| 2 Position Switch | | | | | |
|-------------------|--------------------|--------------|---------------------------|----------|---|
| Model | Operator | Illumination | | Contacts | Output |
| | | Color 1 | Color 2 | | |
| OS80K2LX1XB2Q | 2 Position, Off-On | N/A | Blue Flashing (activated) | 2 NO | Actuation (position 2) activates Color 2, and closes both NO outputs. |

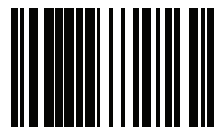


- Color Key**
- 1 = Brown
 - 2 = White
 - 3 = Blue
 - 4 = Black
 - 5 = Gray



WARNING:

- Do not use this device for personnel protection
- Using this device for personnel protection could result in serious injury or death.
- This device does not include the self-checking redundant circuitry necessary to allow its use in personnel safety applications. A device failure or malfunction can cause either an energized (on) or deenergized (off) output condition.



235135