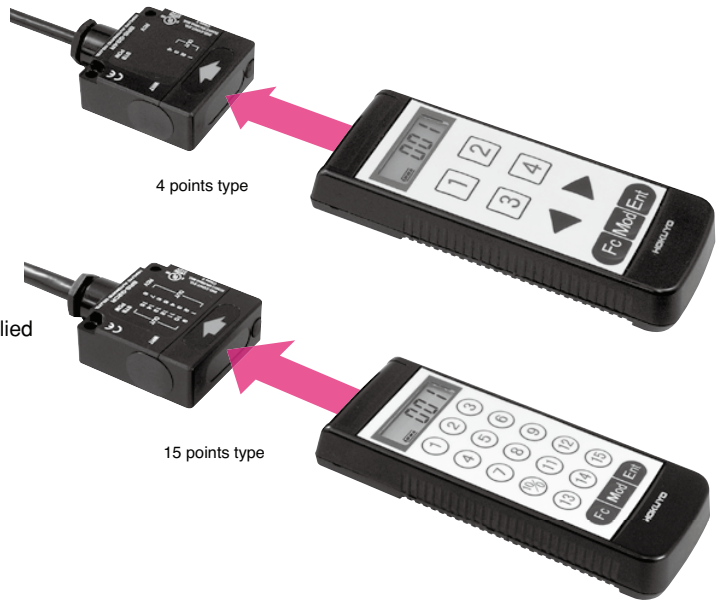


# FA Optical Remote Control System

**BRS** SERIES CE 

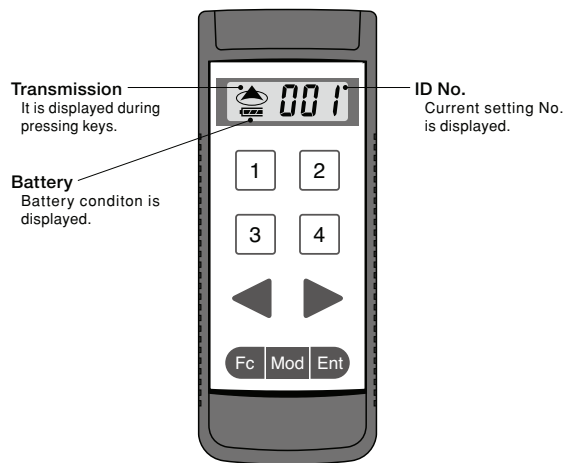
**Easy-to-see display with small size/ low-profile and backlight!!**

- Small size/low-profile/pocket-size.
- 15 points and 4 points type are lined-up.
- 999 kind of ID can be set and speed dial can be made.
- Durability is much improved because sheet switch is applied instead of mechanical switch.



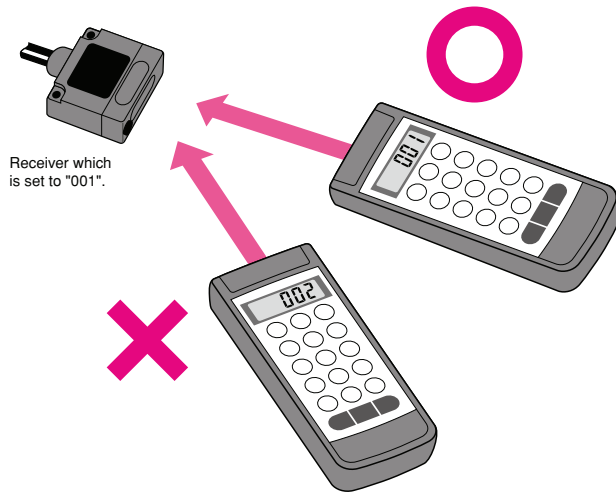
## Easy-to-see display

It makes the display more easy-to-see.



## Doesn't output the other ID than setting ID

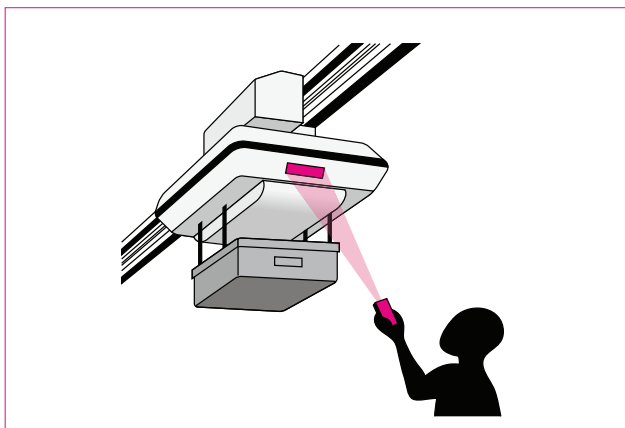
999 kind of ID can be set and this doesn't transmit unless ID corresponds.



## Application

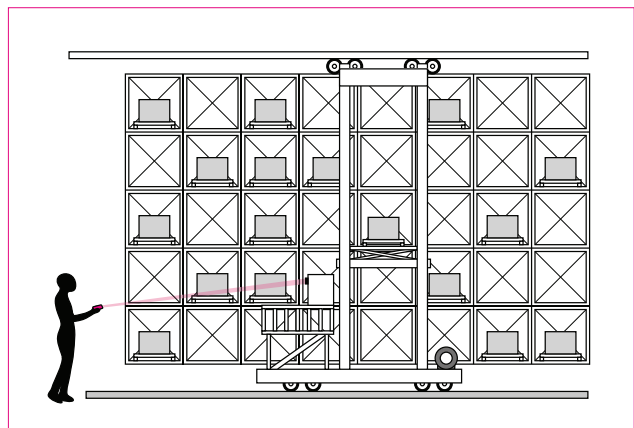
### Remote control of OHT

It can make a manual operation when testing or system troubles.



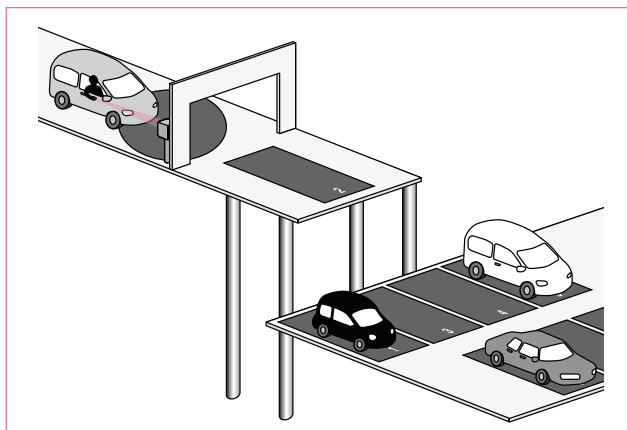
### Notice of loading completion/ transmission of destination

It can instruct load completion or destination from driver on automated warehouse.



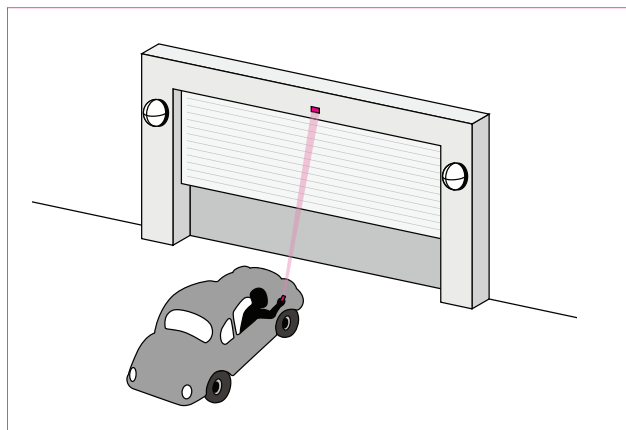
### Pallet choice at tower parking

It can choose the specified pallet inside cars.



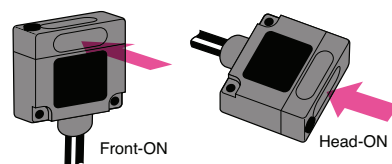
### Opening/closing of shutter

It can remote-control for garage/factory.



### Kinds/model No.

Kinds	Model No.	Distance	Remarks
Transmitter	BRS-G24T	10m	4 points type
	BRS-G2CT		15 points type
Receiver	BRS-G24R	—	Head-ON type
	BRS-H24R		Front-ON type
	BRS-G2CR		Head-ON type
	BRS-H2CR		Front-ON type



### Specifications

#### Transmitter

Model No.	BRS-G24T	BRS-G2CT
Power source	Alkaline cell (4 pcs)	
Battery life	16 hours under continuous use (when not using backlight)	
Transmission distance	10m	
Directional angle	Full angle 30°	
Display	LCD, 3 digits, battery, transmission (with backlight)	
Key numbers	Numerical key:4 points, setting key:5 points,built-in electronic buzzer	Numerical key:15 points, setting key:3 points,built-in electronic buzzer
ID No.setting	Max.999 kinds (it can be set as your option)	
Setting functions	①ID No.setting ②Automatic power-OFF time ③Backlight OFF time ④Buzzer sound ⑤Double-press available ⑥ID No.speed dial registration ⑦Reset (return to initial setting)	
Element	Infrared LED (879nm)	
Modulating system	Pulse-position modulation (455kHz)	
Error detection	Twice coincident system	
Ambient temperature	0 to +40°C	
Ambient humidity	45 to 85%RH, not icing, not condensing	
Insulation resistance	10MΩ 500VDC megger	
Vibration resistance	Double amplitude 1.5mm, 10 to 55Hz, each 2 hour in X, Y and Z directions	
Impact resistance	490m/s <sup>2</sup> , each 6 time in X, Y and Z directions	
Protective structure	Keys surface: IP64 (IEC standard), the other: IP40 (IEC standard)	
Case materials	Polycarbonate	
Weight	Approx.110g (including battery)	

#### Receiver

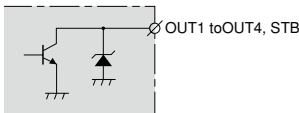
Model No.	BRS-G24R	BRS-H24R	BRS-G2CR	BRS-H2CR
Direction	Head-ON	Front-ON	Head-ON	Front-ON
Power source	24VDC ±10%			
Current consumption	50mA or less			
Directional angle	Right/left: full angle 90°, up/down: full angle 40°			
ID No. setting	999 kinds, Turning counterclockwise: write-in mode (from transmitter), Turning clockwise: operation mode			

<b>Output</b>	Data output: 4 points, strobe 1 point	Data output:15 points,stroke 1 point
	NPN open-collector output (30VDC, 50mA or less, Residual voltage 1.8V or less)	
<b>Output holding time</b>	100msec or more	
<b>Receiving system</b>	Pulse position modulation (455KHz), Twice coincident system	
<b>Indication lamps</b>	Output lamp:data output (OUT1~4) 4 points, strobe output (STB): 1 point	Output lamp:data output (OUT1~15) 15 points, strobe output (STB): 1 point
	Receiving lamp (RCV): 1 point, write-in lamp (WRT): 1 point, power lamp (POW): 1 point	
<b>Connection</b>	Cable (connector at the end)	
<b>Ambient illuminance*</b>	4,000lx (Fluorescent/mercury lamp)	
<b>Ambient temperature</b>	-10 to +50°C	
<b>Ambient humidity</b>	45 to 85%RH, not icing, not condensing	
<b>Environment</b>	No corrosive gas	
<b>Insulation resistance</b>	10MΩ (500VDC megger)	
<b>Noise resistance</b>	Conformity standard IEC (EN) 61000-4-2/-3/-4/-6/-8	
<b>Vibration resistance</b>	Double amplitude 1.5mm, 10 to 55Hz, each 2 hour in X, Y and Z directions	
<b>Impact resistance</b>	490m/s <sup>2</sup> , each 6 time in X, Y and Z directions	
<b>Protective structure</b>	IP64 (IEC standard)	
<b>Case materials</b>	Polycarbonate	
<b>Weight</b>	Approx.240g	

\*Output only when ID No.from transmitter would be coincident with ID set.

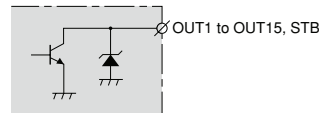
### Output circuit

Receiver with 4 points output



NPN open-collector output  
30VDC, 50mA or less, residual voltage 1.8V or less

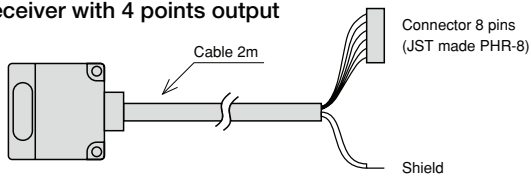
Receiver with 15 points output



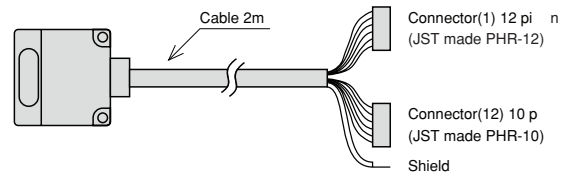
NPN open-collector output  
30VDC,50mA or less,residual voltage 1.8V or less

### Connection

Receiver with 4 points output



Receiver with 15 points output



Colors	Pin No.	Functions
Red	1	OUT1
Yellow	2	OUT2
Green	3	OUT3
Black	4	OUT4
White	5	STB*
Brown	6	+VIN
Blue	7	-VIN
Shield		Shield

Colors	Pin No.	Functions
Brown	CN1-5	OUT9
Red	CN1-7	OUT10
Orange	CN1-9	OUT11
Yellow	CN1-11	OUT12
Green	CN2-1	OUT13
Blue	CN2-3	OUT14
Purple	CN2-5	OUT15
Gray	CN2-7	STB*
White	CN1-3	
Pink	CN1-2	
Brown/black	CN1-6	OUT1
Red/black	CN1-8	OUT2

Colors	Pin No.	Functions
Orange/ black	CN1-10	OUT3
Yellow/ black	CN1-12	OUT4
Green/ black	CN2-2	OUT5
Blue/black	CN2-4	OUT6
Purple/ black	CN2-6	OUT7
Gray/ black	CN2-8	OUT8
White/ black	CN1-4	COM
Pale blue	CN1-1	-VIN
Pink/black	CN2-9	+VIN
Pale blue/black	CN2-10	-VIN
Shield		Shield

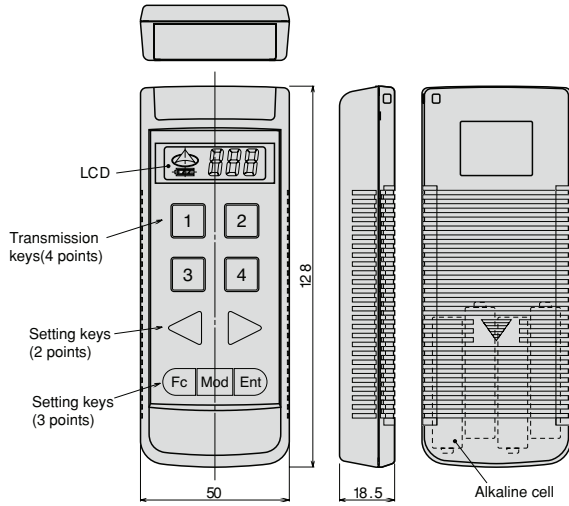
\* Turn ON when data would be fixed.

Note) Don't use the attached connector as relay terminal.

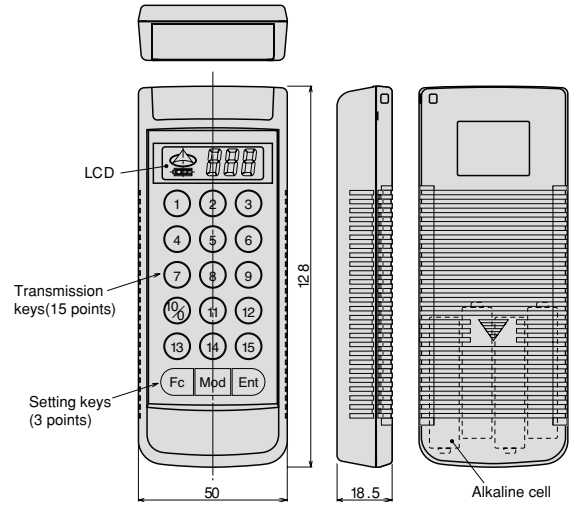
External dimensions

Transmitter

● 4 points



● 15 points



Receiver

